

**PRONTIUS Laboratorios**



**Accredited Laboratory  
Proficiency Testing**

**ENSAYO DE APTITUD / RING TEST**

**ESPECTOMETRIA DE MASAS**

**LABORATORIO #26**

**OGM**

**LABORATORIO #14**

## Results Submissions for Proficiency Test 02363

You are logged in as CG-12488

Proficiency Test 02363 details

**Sample contact:** Mrs CLAUDIA GALLEGOS  
**Proficiency Test:** 02363  
**Product Code:** FCVD14-HON2  
**Test Dates:** 20/11/2018 to 20/12/2018  
**Test Material(s):** T02363 - Honey

[Download Instructions](#)

Submitted by	Submitted on	Your Reference	Laboratory Number	Options
Mrs CLAUDIA GALLEGOS	19/12/2018	Antonio Telles, analyst	26	Options

[View Proficiency Tests](#) [Add Additional Results](#)

21/9/2018

Results Submissions for Proficiency Test GeMMU68 | Fapas Proficiency Testing from Fera



## Results Submissions for Proficiency Test GeMMU68

You are logged in as AG-12232

Proficiency Test GeMMU68 details

**Sample contact:** Sr AGUSTIN GOMEZ  
**Proficiency Test:** GeMMU68  
**Product Code:** FGM5-CCP3  
**Test Dates:** 18/05/2018 to 05/07/2018  
**Test Material(s):** GeMMU68 - 100% Soya Flour

[Download Instructions \(https://fapas.com/ptgapi/results/registrations/548961/ptinstructions\)](https://fapas.com/ptgapi/results/registrations/548961/ptinstructions)

Submitted by	Submitted on	Your Reference	Laboratory Number	Options
Sr AGUSTIN GOMEZ	21/06/2018	GMOs detection IP-18-05-0207	14	Options

[View Proficiency Tests \(https://fapas.com/shop/ptresults/pts\)](https://fapas.com/shop/ptresults/pts)

[Add Additional Results \(https://fapas.com/shop/ptresults/548961/resultsetsubmission\)](https://fapas.com/shop/ptresults/548961/resultsetsubmission)

### Stay up to date with Fapas

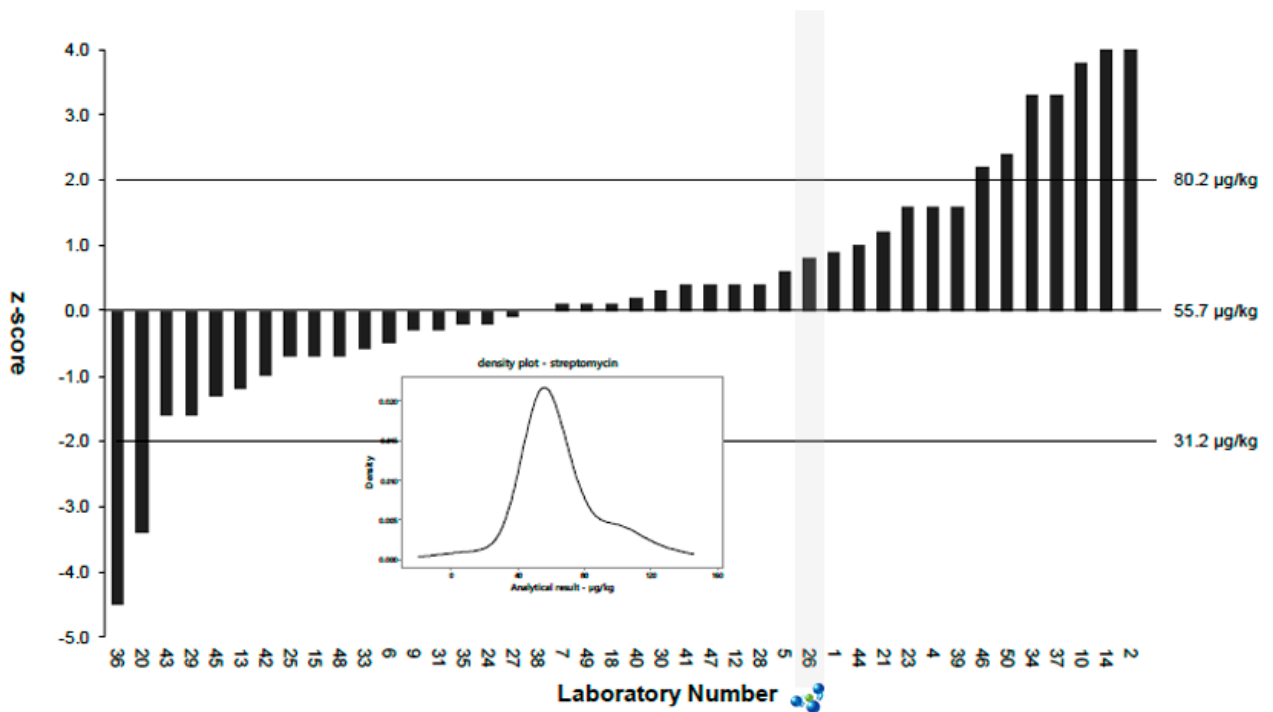
Email address

Sign up

**Table 2 (continued): Results and z-Scores for Streptomycin, Dihydrostreptomycin and Total Aminoglycosides**

laboratory number	analyte											
	Streptomycin assigned value: 55.7 µg/kg				Dihydrostreptomycin assigned value: 52.4 µg/kg				Total Aminoglycosides assigned value: 99.3 µg/kg			
	result	IS/% rec	CCβ	z-score	result	IS/% rec	CCβ	z-score	result	IS/% rec	CCβ	z-score
016	#				#				> 20		20	
017	> 40	N	5		#				#			
018	57.05	100.62	20.40	0.1	#				#			
019	#				#				#			
020	13.9	Y	5.25	-3.4	32.6	Y	11.4	-1.7	#			
021	70.25	95		1.2	0			-4.5	0			-4.5
022	#				#				#			
023	75.1	R	7.5	1.6	55.5	R	5.5	0.3	0	R		-4.5
024	53.7	Y, M	56	-0.2	45.8	Y, M	17	-0.6	99.5	Y, M	38	0.0
025	46.87			-0.7	65.73			1.2	104.9			0.3
026	65.878	'Y' 'M' 'S'	10	0.8	42.927	'Y' 'M' 'S'	10	-0.8	#			
027	54.3	Y		-0.1	35.8	Y		-1.4	90.1	Y		-0.4
028	60.95	no	5	0.4	44.59	no	5	-0.7	#			
029	36.1	S	20	-1.6	34.0	S	20	-1.6	#			
030	59.19			0.3	45.96			-0.6	#			

# = not analysed    Y = internal standard used    N = internal standard not used    M = matrix-extracted calibration    R = recovery correction  
S = standard addition    z-scores outside |z| > 2 are shown in **bold**, see Section 5



**Figure 4: z-Scores for Streptomycin**  
insert shows a plot of the distribution of results



Accredited Laboratory  
Proficiency Testing

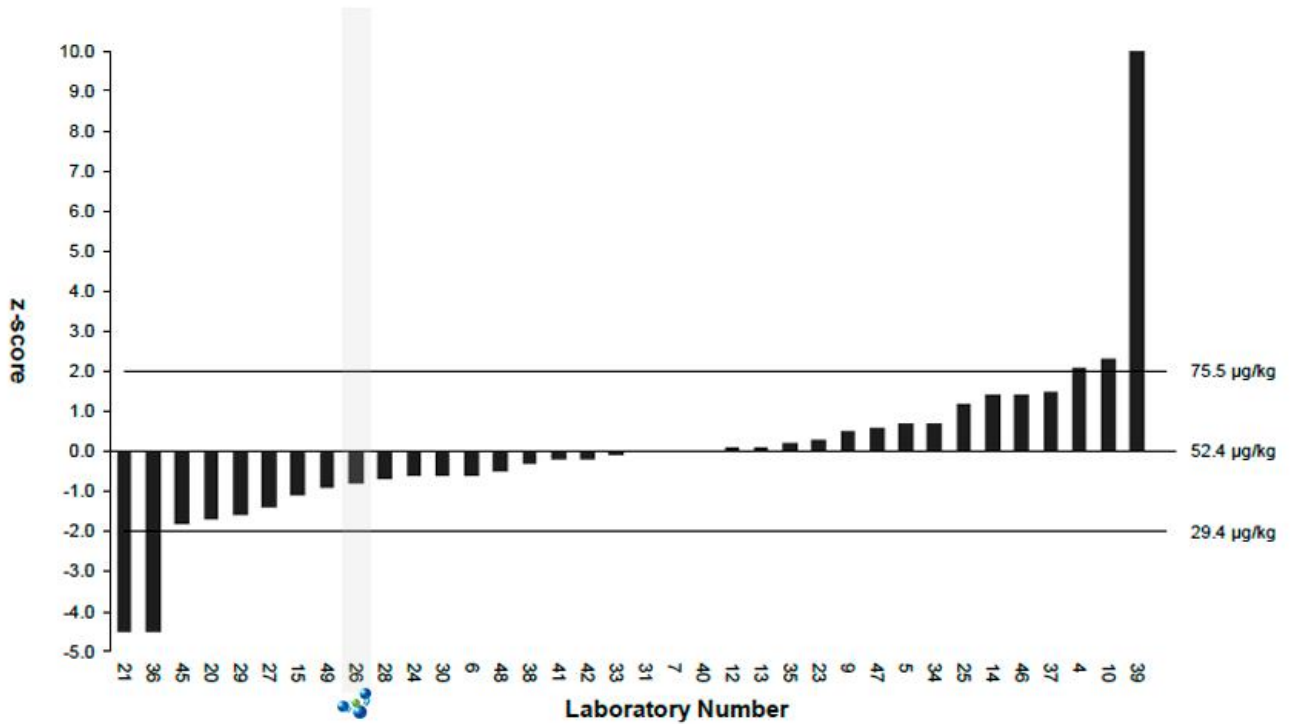



Figure 5: z-Scores for Dihydrostreptomycin

**Table 2: Qualitative Results and Evaluations,  
Roundup Ready® (40-3-2) Soya and MON89788 Soya**

laboratory number	Roundup Ready® (40-3-2) Soya consensus: 100% detected (positive) (expected result: detected)			MON89788 Soya consensus: 93% not detected (negative) (expected result: unknown)		
	result detected / not detected	lod %	evaluation	result detected / not detected	lod %	evaluation
001	Detected	0.01	S			
002	Detected	0.05	S	Not Detected	0.1	A
003	Detected	4 copie genomice	S	Not Detected		A
004						
005	Detected	0.1	S	Not Detected	0.1	A
006	Detected	0.045%	S	Not Detected	0.1%	A
007	Detected	0.01	S	Not Detected	0.01	A
008	Detected	0.1%	S	Detected	0.1%	D
009	Detected	0.01	S			
010	Detected	0,01 %	S	Not Detected	0.01 %	A
011	Detected	0.01	S	Not Detected	0.01	A
012	Detected	0.01%	S			
013						
 014	Detected		S			
015	Detected	0.05	S	Not Detected	0.05	A
016	Detected	0.1%	S			
017	Detected	0.1	S			
018						
019	Detected		S			
020						
021	Detected	18 COPIE	S			
022						
023	Detected	0.01	S			
024	Detected	50 cop	S	Not Detected	50 cop	A
025	Detected	0.045% w/w	S	Not Detected	0.045% w/w	A

lod = limit of detection

S = satisfactory

A = agrees

NS = not satisfactory

D = disagrees